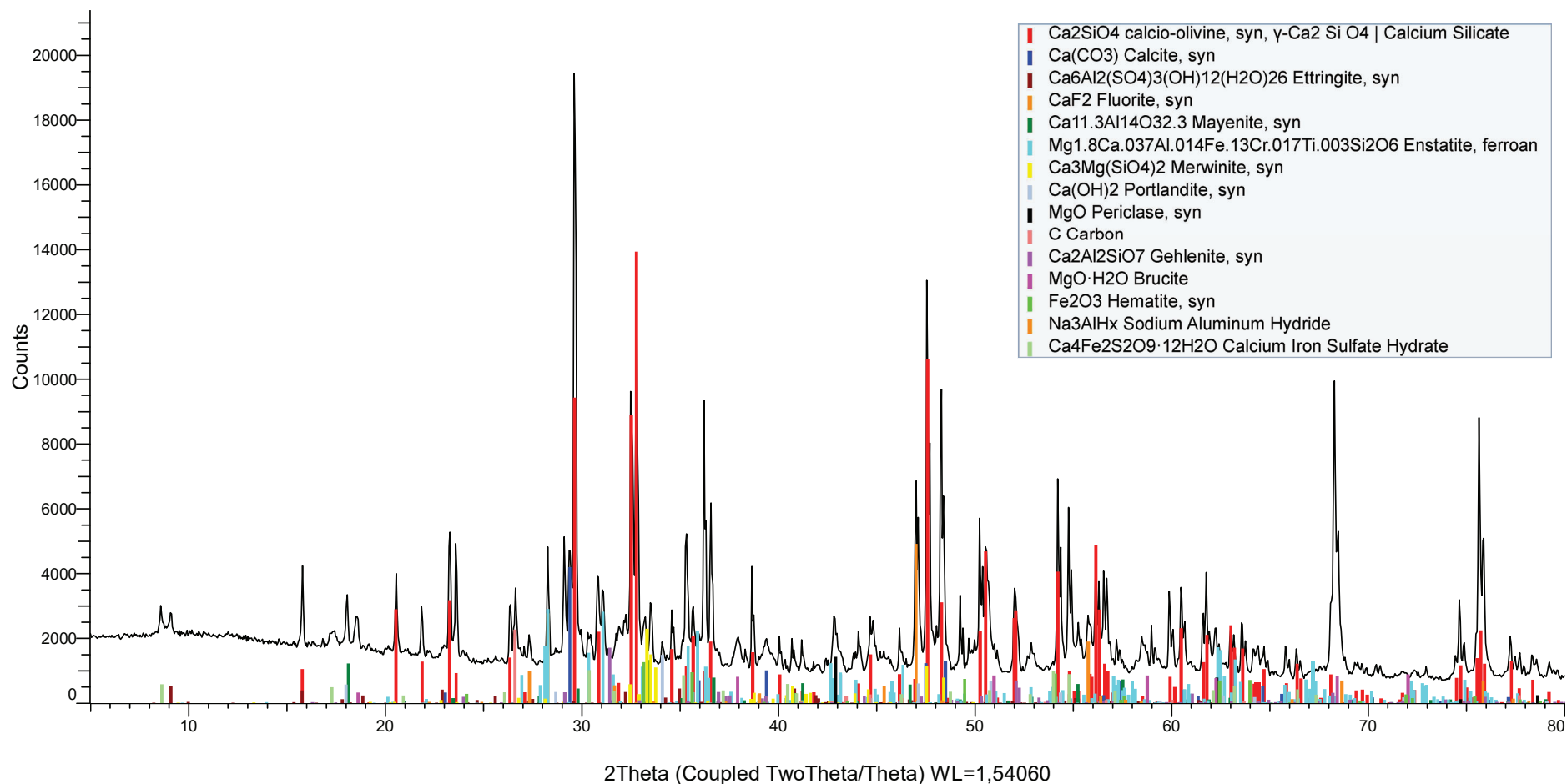


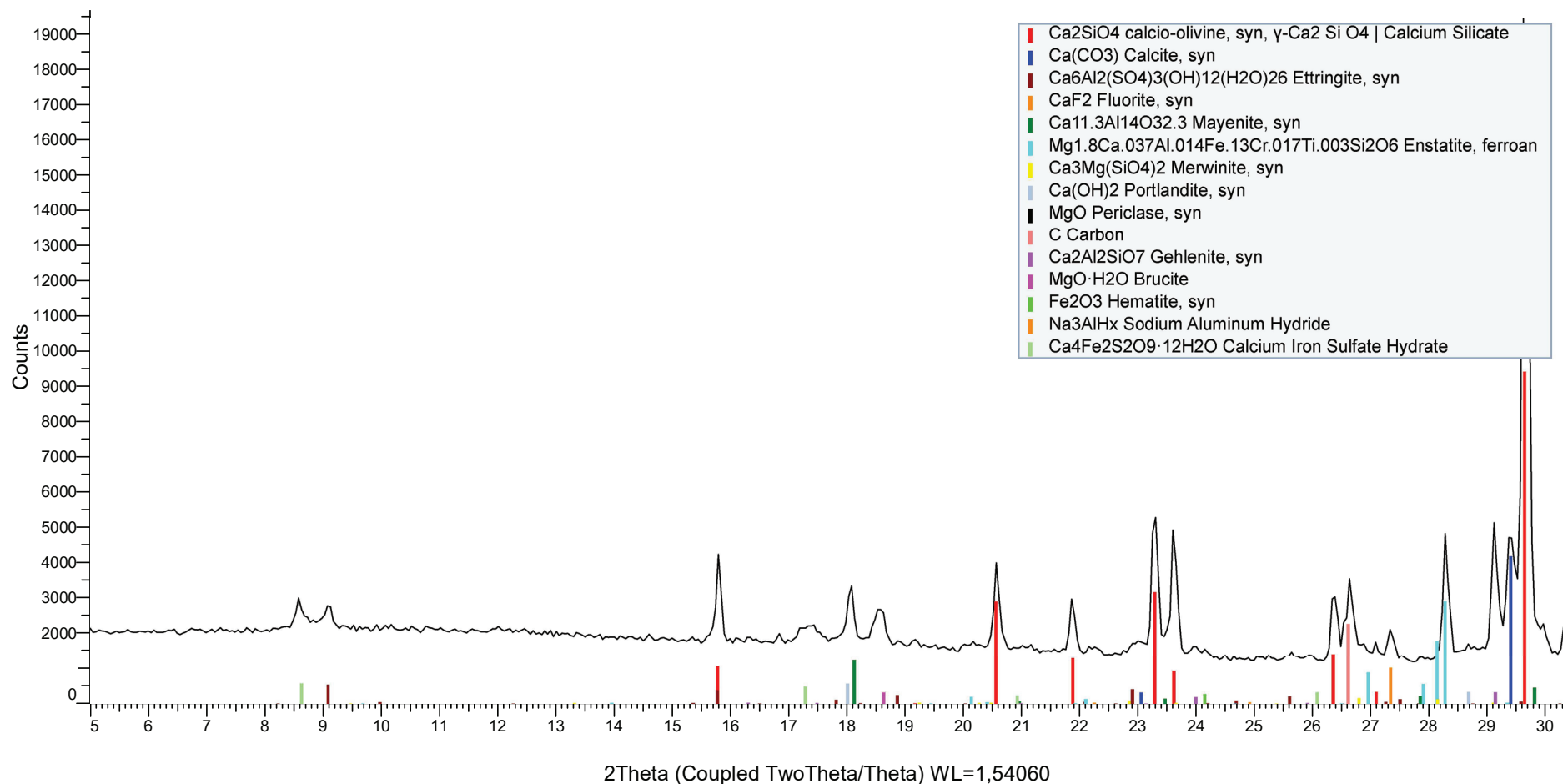


LFS-Hormor (Coupled TwoTheta/Theta)



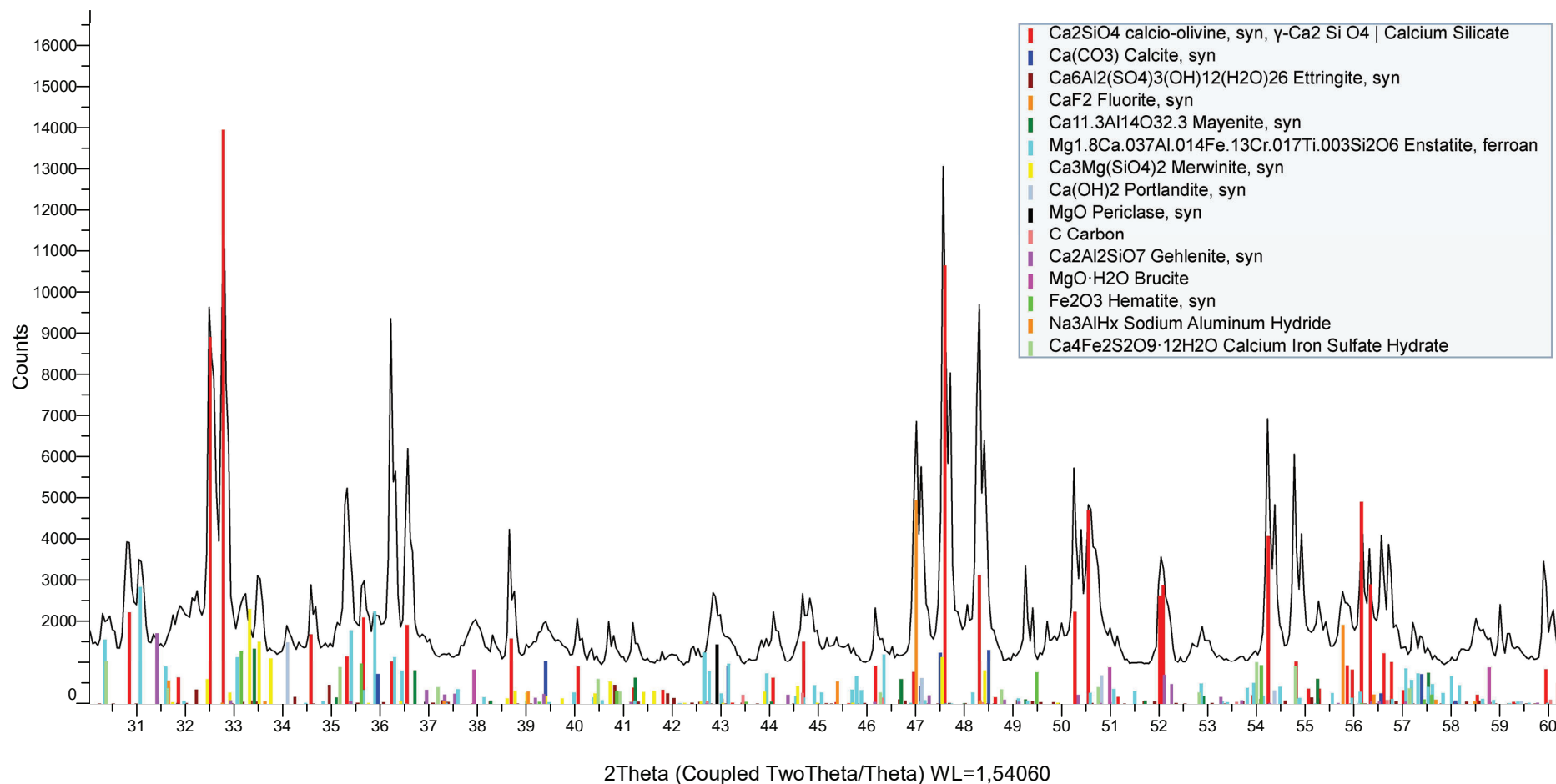


LFS-Hormor (Coupled TwoTheta/Theta)



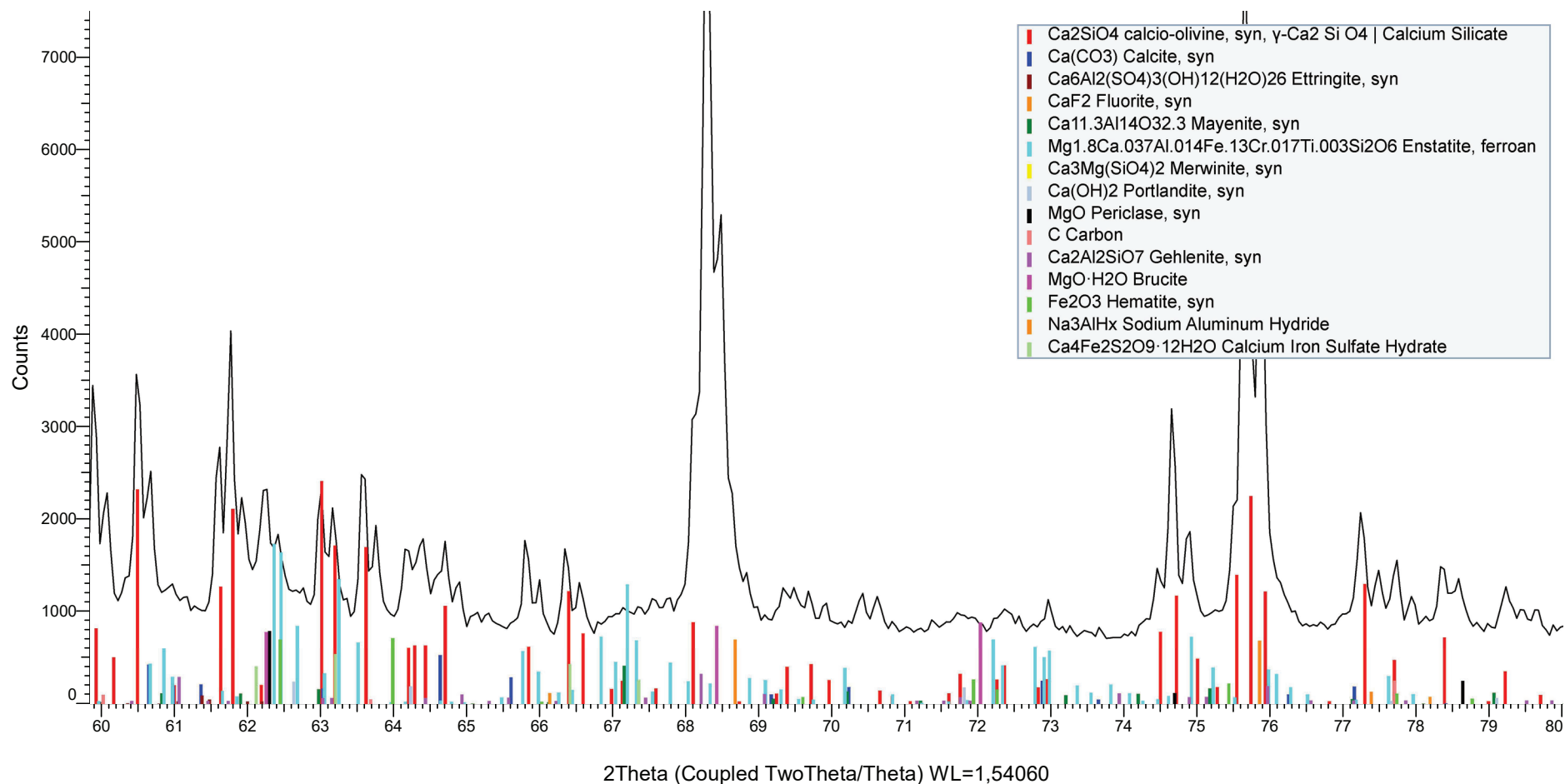


LFS-Hormor (Coupled TwoTheta/Theta)





LFS-Hormor (Coupled TwoTheta/Theta)



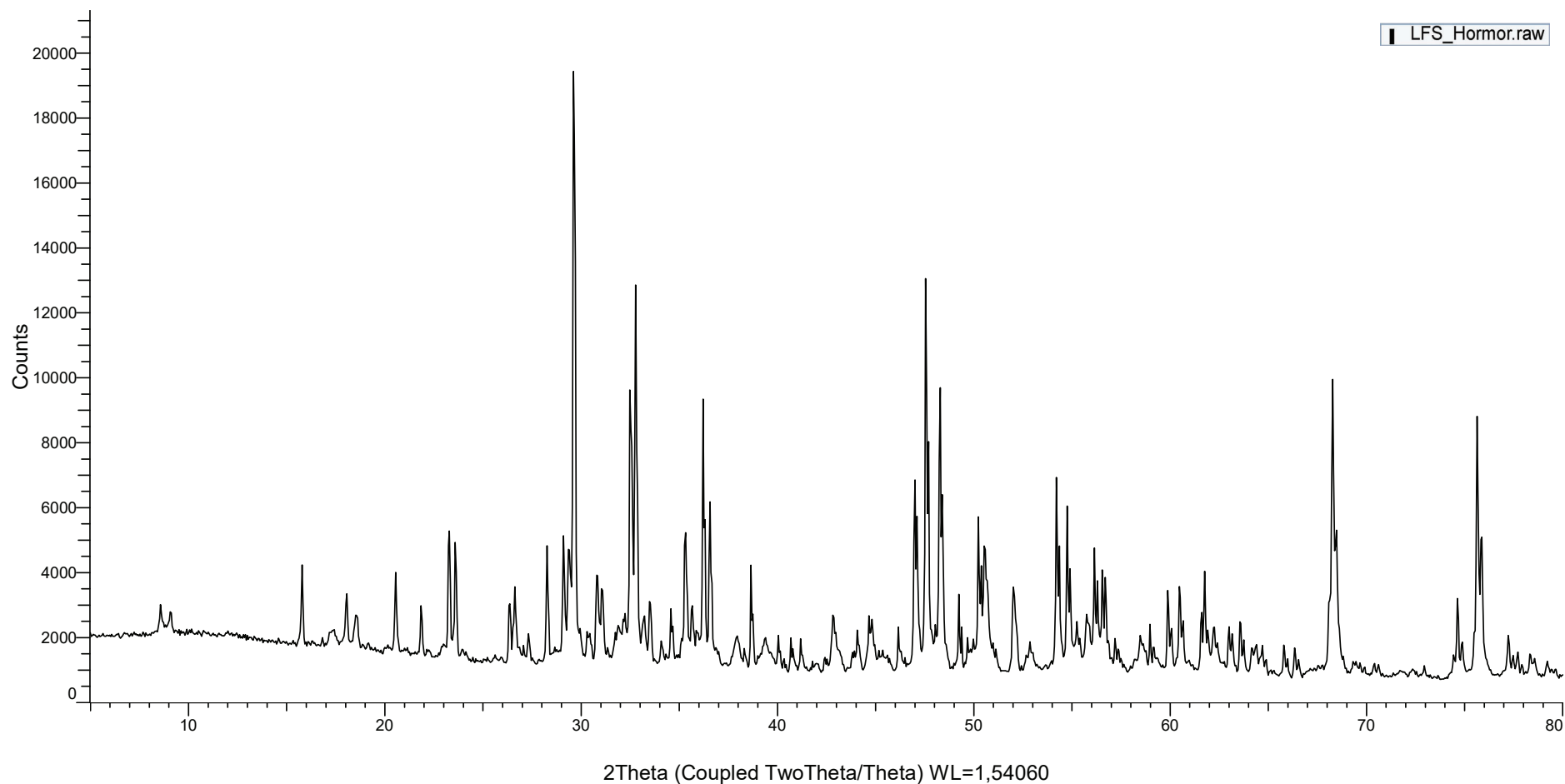


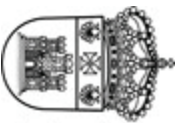
UNIVERSIDAD
DE BURGOS

Vicerrectorado de Investigación,
Transferencia e Innovación



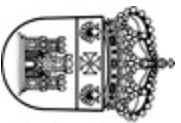
LFS-Hormor (Coupled TwoTheta/Theta)





Peak List #1
















Index	Angle	d Value	Net Intensity	Gross Intensity	Rel. Intensity	h,k,l
1	8.584 °	10.29271 Å	866	2976	4.9 %	n.a.
2	9.077 °	9.73442 Å	666	2784	3.8 %	n.a.
3	15.791 °	5.60772 Å	2350	4160	13.5 %	n.a.
4	17.348 °	5.10753 Å	457	2217	2.6 %	n.a.
5	18.061 °	4.90766 Å	1551	3270	8.9 %	n.a.
6	18.566 °	4.77524 Å	1001	2682	5.8 %	n.a.
7	19.159 °	4.62872 Å	195	1823	1.1 %	n.a.
8	20.563 °	4.31582 Å	2399	3938	13.8 %	n.a.
9	21.862 °	4.06223 Å	1414	2892	8.1 %	n.a.
10	23.266 °	3.82017 Å	4576	5970	26.3 %	n.a.
11	23.590 °	3.76842 Å	1486	2859	8.6 %	n.a.
12	24.101 °	3.68964 Å	146	1479	0.8 %	n.a.
13	26.407 °	3.37250 Å	1382	2644	8.0 %	n.a.
14	26.629 °	3.34479 Å	2226	3484	12.8 %	n.a.
15	27.331 °	3.26054 Å	836	2070	4.8 %	n.a.
16	28.271 °	3.15416 Å	3395	4656	19.5 %	n.a.
17	29.124 °	3.06376 Å	4295	5611	24.7 %	n.a.
18	29.398 °	3.03580 Å	3372	4702	19.4 %	n.a.
19	29.626 °	3.01293 Å	17370	18709	100.0 %	n.a.
20	30.370 °	2.94080 Å	565	1925	3.3 %	n.a.
21	30.950 °	2.88699 Å	1099	2465	6.3 %	n.a.
22	31.915 °	2.80186 Å	985	2340	5.7 %	n.a.
23	32.464 °	2.75575 Å	5020	6357	28.9 %	n.a.
24	32.788 °	2.72923 Å	11438	12761	65.9 %	n.a.
25	33.236 °	2.69342 Å	1364	2662	7.9 %	n.a.
26	33.507 °	2.67230 Å	1791	3071	10.3 %	n.a.
27	34.110 °	2.62645 Å	546	1803	3.1 %	n.a.
28	34.618 °	2.58904 Å	1057	2319	6.1 %	n.a.
29	35.304 °	2.54028 Å	5062	6320	29.1 %	n.a.
30	35.678 °	2.51451 Å	1648	2897	9.5 %	n.a.
31	36.297 °	2.47300 Å	4291	5519	24.7 %	n.a.
32	37.947 °	2.36923 Å	870	2029	5.0 %	n.a.
33	38.660 °	2.32715 Å	2922	4058	16.8 %	n.a.
34	39.393 °	2.28553 Å	885	1982	5.1 %	n.a.
35	40.022 °	2.25101 Å	703	1755	4.0 %	n.a.
36	40.727 °	2.21368 Å	573	1581	3.3 %	n.a.
37	41.224 °	2.18810 Å	608	1617	3.5 %	n.a.
38	42.014 °	2.14877 Å	195	1190	1.1 %	n.a.
39	42.869 °	2.10787 Å	1621	2624	9.3 %	n.a.
40	44.096 °	2.05203 Å	992	2018	5.7 %	n.a.
41	44.676 °	2.02672 Å	1565	2599	9.0 %	n.a.
42	44.806 °	2.02117 Å	1411	2446	8.1 %	n.a.
43	45.362 °	1.99767 Å	562	1594	3.2 %	n.a.
44	46.308 °	1.95902 Å	534	1573	3.1 %	n.a.
45	47.002 °	1.93171 Å	566	6679	32.3 %	n.a.
46	47.069 °	1.92911 Å	2311	3386	13.3 %	n.a.
47	47.563 °	1.91022 Å	11236	12325	64.7 %	n.a.
48	47.693 °	1.90534 Å	1849	2941	10.6 %	n.a.
49	48.291 °	1.88313 Å	8208	9305	47.3 %	n.a.



50	48,390 °	1,87948 Å	5090	6187	29,3 %	n.a.
51	49,263 °	1,84822 Å	1741	2832	10,0 %	n.a.
52	49,323 °	1,84611 Å	641	1732	3,7 %	n.a.
53	50,210 °	1,81555 Å	2767	3836	15,9 %	n.a.
54	50,385 °	1,80967 Å	3094	4156	17,8 %	n.a.
55	50,558 °	1,80388 Å	3716	4769	21,4 %	n.a.
56	52,038 °	1,75601 Å	2486	3489	14,3 %	n.a.
57	52,879 °	1,73003 Å	789	1822	4,5 %	n.a.
58	54,198 °	1,69099 Å	3054	4121	17,6 %	n.a.
59	54,359 °	1,68637 Å	3602	4672	20,7 %	n.a.
60	54,766 °	1,67480 Å	4765	5841	27,4 %	n.a.
61	54,921 °	1,67043 Å	3315	4392	19,1 %	n.a.
62	55,295 °	1,66002 Å	1810	2886	10,4 %	n.a.
63	55,769 °	1,64704 Å	1573	2643	9,1 %	n.a.
64	56,152 °	1,63669 Å	3656	4717	21,0 %	n.a.
65	56,309 °	1,63250 Å	2529	3585	14,6 %	n.a.
66	56,566 °	1,62569 Å	2726	3772	15,7 %	n.a.
67	56,716 °	1,62176 Å	2596	3636	14,9 %	n.a.
68	57,262 °	1,60757 Å	592	1602	3,4 %	n.a.
69	58,685 °	1,57194 Å	633	1651	3,6 %	n.a.
70	58,984 °	1,56468 Å	728	1759	4,2 %	n.a.
71	59,148 °	1,56074 Å	658	1695	3,8 %	n.a.
72	59,922 °	1,54241 Å	1954	3008	11,2 %	n.a.
73	60,081 °	1,53872 Å	1217	2273	7,0 %	n.a.
74	60,495 °	1,52916 Å	2398	3455	13,8 %	n.a.
75	60,704 °	1,52440 Å	1610	2665	9,3 %	n.a.
76	61,768 °	1,50068 Å	2909	3955	16,7 %	n.a.
77	62,375 °	1,48752 Å	665	1707	3,8 %	n.a.
78	63,020 °	1,47385 Å	1217	2242	7,0 %	n.a.
79	63,602 °	1,46175 Å	1435	2437	8,3 %	n.a.
80	64,381 °	1,44594 Å	785	1739	4,5 %	n.a.
81	65,834 °	1,41750 Å	780	1619	4,5 %	n.a.
82	66,371 °	1,40732 Å	729	1563	4,2 %	n.a.
83	68,286 °	1,37244 Å	8874	9774	51,1 %	n.a.
84	69,443 °	1,35238 Å	291	1180	1,7 %	n.a.
85	70,407 °	1,33622 Å	321	1173	1,8 %	n.a.
86	71,755 °	1,31438 Å	157	966	0,9 %	n.a.
87	72,375 °	1,30464 Å	216	1016	1,2 %	n.a.
88	72,954 °	1,29571 Å	337	1118	1,9 %	n.a.
89	74,655 °	1,27035 Å	2291	3086	13,2 %	n.a.
90	75,739 °	1,25484 Å	3181	4023	18,3 %	n.a.
91	77,476 °	1,23098 Å	563	1431	3,2 %	n.a.
92	77,714 °	1,22781 Å	634	1503	3,7 %	n.a.
93	78,374 °	1,21911 Å	594	1457	3,4 %	n.a.
94	79,351 °	1,20654 Å	125	967	0,7 %	n.a.



Pattern List #1

Show	Color	Pattern #	Compound Name	Formula	Concentration Level
Yes		PDF 01-070-2450	calcio-olivine, syn, γ -Ca ₂ Si O ₄ Calcium Silicate	Ca ₂ SiO ₄	Major
Yes		PDF 01-071-3699	Calcite, syn	Ca(CO ₃)	Minor
Yes		PDF 01-075-7554	Ettringite, syn	Ca ₆ Al ₂ (SO ₄) ₃ (OH) ₁₂ (H ₂ O) ₂₆	Trace
Yes		PDF 00-035-0816	Fluorite, syn	CaF ₂	Major
Yes		PDF 01-078-0910	Mayenite, syn	Ca _{11.3} Al ₁₄ O _{32.3}	Minor
Yes		PDF 01-088-2377	Enstatite, ferroan	Mg _{1.8} Ca _{.037} Al _{.014} Fe _{.13} Cr _{.017} Ti _{.003} Si ₂ O ₆	Major
Yes		PDF 00-035-0591	Merwinite, syn	Ca ₃ Mg(SiO ₄) ₂	Major
Yes		PDF 00-044-1481	Portlandite, syn	Ca(OH) ₂	Minor
Yes		PDF 00-045-0946	Periclase, syn	MgO	Minor
Yes		PDF 00-026-1076	Carbon	C	Major
Yes		PDF 00-035-0755	Gehlenite, syn	Ca ₂ Al ₂ SiO ₇	Minor
Yes		PDF 00-002-1092	Brucite	MgO·H ₂ O	Minor
Yes		PDF 00-033-0664	Hematite, syn	Fe ₂ O ₃	Minor
Yes		PDF 00-052-0878	Sodium Aluminum Hydride	Na ₃ AlH _x	Minor
Yes		PDF 00-044-0601	Calcium Iron Sulfate Hydrate	Ca ₄ Fe ₂ S ₂ O ₉ ·12H ₂ O	Minor